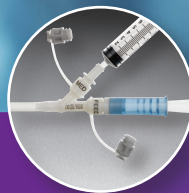




EndoVive™

Enteral Access Devices



Product and
Procedure Guide

ENFit® Transition Frequently Asked Questions for Hospitals & HCPs

Is the Boston Scientific portfolio ENFit compatible?

- ▶ Yes, our Enteral Feeding portfolio is ENFit compatible.*

My hospital has questions about ENFit – where can I get more information?

- ▶ You can call, text, or email your Boston Scientific Representative anytime with ENFit questions.

Are there any other ENFit resources my hospital can reference?

- ▶ **GEDSA:** www.stayconnected.org
- ▶ **GEDSA YouTube Channel:**
www.youtube.com/channel/UCa8w9VYxW8PZDEwloI9b00
- ▶ **GEDSA Position Statement on ENFit FDA Letter:**
<http://stayconnected.org/wp-content/uploads/2018/10/GEDSA-Position-Statement-on-FDA-Letter-2018-.pdf>
- ▶ **FDA Letter Encouraging Hospitals to move to ENFit:**
<https://www.fda.gov/downloads/MedicalDevices/ResourcesforYou/Industry/UCM619782.pdf>
- ▶ **CMS Memo on ENFit:**
<https://www.cms.gov/Medicare/Provider-Enrollment-and-Certification/SurveyCertificationGenInfo/Downloads/Survey-and-Cert-Letter-13-14.pdf>

ENFit

New standards, such as ISO 80368-3, have been implemented to address safety issues related to enteral feeding. The new ENFit connector is designed to reduce risk of misconnections of the enteral feeding tube. All enteral access devices, including feeding tubes, administration sets and enteral syringes will be impacted with this change.

Table of Contents

1 EndoVive™ Initial Placements

- One-Step Button™ Gastrostomy Device
- Standard Percutaneous Endoscopic Gastrostomy (PEG) Kit
- Safety Percutaneous Endoscopic Gastrostomy (PEG) Kit

5 EndoVive Through-The-PEG (TTP)

- (TTP) Jejunal Feeding Tube

8 EndoVive Gastrostomy Tubes

- Standard: Straight and Right Angle

10 Procedure Guides

- One-Step Button
- Jejunal Feeding Tube Procedure Guide for Pull Method

13 Enteral Feeding

- Procedural Reimbursement Guide

14 Ordering Information: EndoVive™ Enteral Access Devices



Initial Placements

EndoVive™ Enteral Access Devices

One-Step Button™ Gastrostomy Device

Product Features

Cost Effective

- A cost-effective solution to provide low profile enteral feeding in one initial procedure

High-Grade Silicone Button-Bolstered Low Profile Initial Placement

- Designed for performance and consistent flow
- Radiopaque silicone designed to enhance placement confirmation

Low Profile Design

- Low profile design helps reduce risk of accidental pull-out
- Product flexibility at skin level designed to enhance patient comfort and cosmetic appeal

Universal 1.9 mm O.D. x 240 cm Retrieval Snare

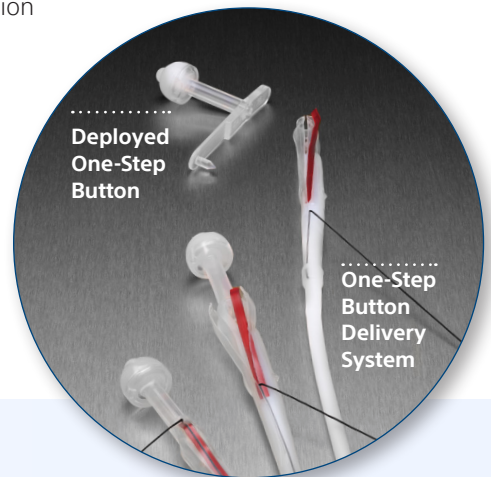
- Designed to traverse scopes with a 2.0 mm or larger working channel

Anti-Reflux Valve

- Designed to help reduce gastric backflow
- Kit includes accessories designed to allow for gastric decompression

Multiple Sizes and Accessories

- Color-coded French sizes with corresponding feeding accessories and multiple lengths for broad patient coverage
- Specially designed round spacers to accommodate “in-between” sizes and short-term weight gain



One-Step Button Low Profile PEG Kits*

| Non-ENFit Codes | ENFit Codes | Description | Length (cm) | Color Code | Units |
|-----------------|-------------|--|-------------|------------|-------|
| M00563120 | M00509690 | 18Fr Low Profile PEG Kit, Pull | 1.2 | Yellow | Box 1 |
| M00563130 | M00509700 | 18Fr Low Profile PEG Kit, Pull | 1.7 | Yellow | Box 1 |
| M00563140 | M00509710 | 18Fr Low Profile PEG Kit, Pull | 2.4 | Yellow | Box 1 |
| M00563150 | M00509720 | 18Fr Low Profile PEG Kit, Pull | 3.4 | Yellow | Box 1 |
| M00563160 | M00509730 | 18Fr Low Profile PEG Kit, Pull | 4.4 | Yellow | Box 1 |
| M00563180 | M00509740 | 18Fr Low Profile PEG Kit, Push (Guidewire) | 1.7 | Yellow | Box 1 |
| M00563190 | M00509750 | 18Fr Low Profile PEG Kit, Push (Guidewire) | 2.4 | Yellow | Box 1 |
| M00563010 | M00509580 | 24Fr Low Profile PEG Kit, Pull | 1.7 | Blue | Box 1 |
| M00563020 | M00509590 | 24Fr Low Profile PEG Kit, Pull | 2.4 | Blue | Box 1 |
| M00563030 | M00509600 | 24Fr Low Profile PEG Kit, Pull | 3.4 | Blue | Box 1 |
| M00563040 | M00509610 | 24Fr Low Profile PEG Kit, Pull | 4.4 | Blue | Box 1 |
| M00563080 | M00509630 | 24Fr Low Profile PEG Kit, Push (Guidewire) | 2.4 | Blue | Box 1 |
| M00563090 | M00509620 | 24Fr Low Profile PEG Kit, Push (Guidewire) | 3.4 | Blue | Box 1 |
| M00563100 | M00509680 | 24Fr Low Profile PEG Kit, Push (Guidewire) | 4.4 | Blue | Box 1 |

Replacement

EndoVive™ Enteral Access Devices

Low Profile Button Replacement Feeding Tubes

Product Features

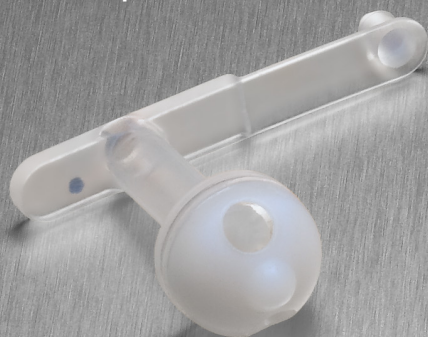
High-Grade Silicone Button-Bolstered Low Profile Replacement

- Radiopaque silicone designed to provide placement confirmation
- Inserted through an existing stoma
- Low profile design helps reduce risk of accidental pull-out
- Product flexibility at skin level designed to enhance patient comfort and for cosmetic appeal
- Designed to reduce gastric backflow
- Kit includes accessories for gastric decompression
- Color-coded French sizes with corresponding feeding accessories and multiple lengths for broad patient coverage
- Specially designed round spacers to accommodate “in-between” sizes and short-term weight gain

KIT CONTENTS

- (1) Button Kit
- (2) Percutaneous Stoma Measuring Device (PSMD)
- (1) Spacer Disk Variety Pack
- (1) Right Angle Decompression Tube
- (1) Patient Care Kit
 - 60cc Catheter Tip Syringe
 - Right Angle Feeding Set
 - Bolus Feeding Set
 - EndoVive Patient Care Booklet

Low Profile Button Replacement



Low Profile Button Replacements

| Non-ENFit Codes | ENFit Codes | Description | Length (cm) | Units |
|-----------------|-------------|-------------------------------------|-------------|-------|
| M00562760 | M00509830 | 18Fr Low Profile Button Replacement | 1.2 | Box 1 |
| M00562770 | M00509840 | 18Fr Low Profile Button Replacement | 1.7 | Box 1 |
| M00562780 | M00509850 | 18Fr Low Profile Button Replacement | 2.4 | Box 1 |
| M00562790 | M00509860 | 18Fr Low Profile Button Replacement | 3.4 | Box 1 |
| M00562800 | M00509870 | 18Fr Low Profile Button Replacement | 4.4 | Box 1 |
| M00562820 | M00509410 | 24Fr Low Profile Button Replacement | 1.7 | Box 1 |
| M00562830 | M00509420 | 24Fr Low Profile Button Replacement | 2.4 | Box 1 |
| M00562840 | M00509430 | 24Fr Low Profile Button Replacement | 3.4 | Box 1 |
| M00562850 | M00509440 | 24Fr Low Profile Button Replacement | 4.4 | Box 1 |

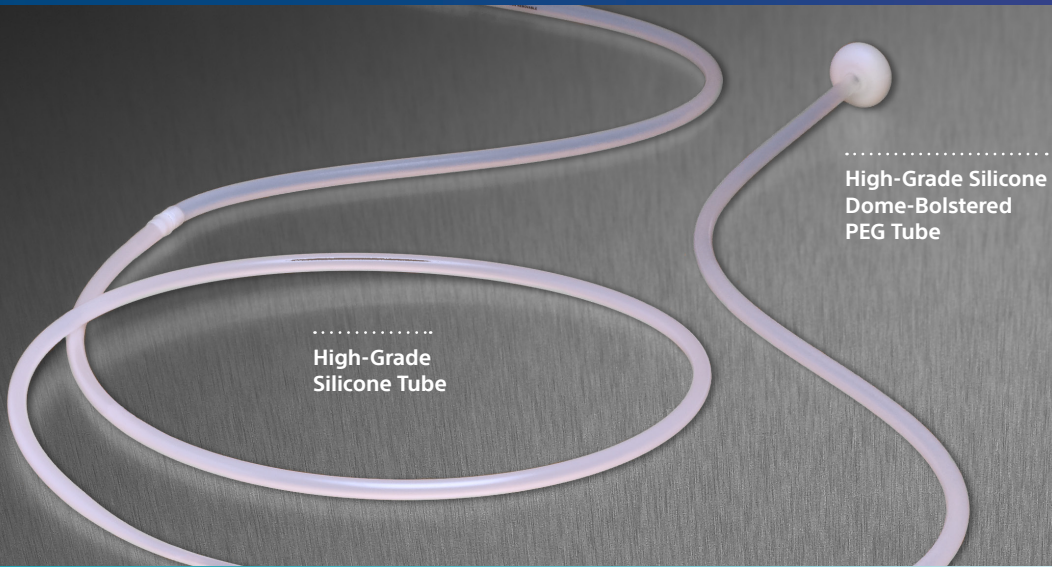
Low Profile Button Accessories

| Non-ENFit Codes | ENFit Codes | Description | Length (cm) | Units |
|-----------------|-------------|-------------------------------------|-------------|--------|
| M00580401 | M00501121 | 18Fr Decompression Tube | 1.2 | Box 10 |
| M00580411 | M00501131 | 18Fr Decompression Tube | 1.7 | Box 10 |
| M00580421 | M00501141 | 18Fr Decompression Tube | 2.4 | Box 10 |
| M00580431 | M00501151 | 18Fr Decompression Tube | 3.4 | Box 10 |
| M00580441 | M00501161 | 18Fr Decompression Tube | 4.4 | Box 10 |
| M00580461 | M00501181 | 24Fr Decompression Tube | 1.7 | Box 10 |
| M00580471 | M00501191 | 24Fr Decompression Tube | 2.4 | Box 10 |
| M00580481 | M00501201 | 24Fr Decompression Tube | 3.4 | Box 10 |
| M00580491 | M00501211 | 24Fr Decompression Tube | 4.4 | Box 10 |
| M00580171 | M00501091 | 18Fr Bolus Straight Adapter | | Box 10 |
| M00580181 | M00501061 | 18Fr Continuous Right-Angle Adapter | | Box 10 |
| M00580231 | M00501101 | 24Fr Bolus Straight Adapter | | Box 10 |
| M00580241 | M00501071 | 24Fr Continuous Right-Angle Adapter | | Box 10 |



Initial Placements

EndoVive™ Enteral Access Devices



High-Grade Silicone Tube

High-Grade Silicone Dome-Bolstered PEG Tube

STANDARD Percutaneous Endoscopic Gastrostomy (PEG) Kit

Product Features

High-Grade Silicone Dome-Bolstered PEG Tube

- Designed for performance and consistent flow
- Facilitates traction removal

Universal 1.9 mm O.D. x 240 cm Retrieval Snare

- Traverses scopes with a 2.0 mm or larger working channel
- Universal-sized snare, intended to eliminate the cost of a specialty snare

Double-Tier Tray Packaging

- Kit organization promotes procedural efficiency

External Bolsters

- Two external bolster options: to accommodate physician and patient needs: Round; T-Bar

Multiple Sizes and Accessories

- Multiple French sizes for broad patient coverage
- Separate feeding ports
- C-Clamp designed to help reduce risk of tube reflux and leaking

Standard PEG Kit

| Non-ENFit Codes | ENFit Codes | Description | Units |
|-----------------|-------------|---|-------|
| M00568201 | M00509041 | 20Fr Standard PEG Kit, Pull with Lidocaine Ampule | Box 2 |
| M00568211 | M00509051 | 20Fr Standard PEG Kit, Push with Lidocaine Ampule | Box 2 |
| M00568241 | M00509061 | 24Fr Standard PEG Kit, Pull with Lidocaine Ampule | Box 2 |
| M00568251 | M00509071 | 24Fr Standard PEG Kit, Push with Lidocaine Ampule | Box 2 |

PEG Accessories

| Non-ENFit Codes | ENFit Codes | Description | Units |
|-----------------|-------------|--------------|--------|
| M00580641 | M00501261 | 20Fr Y-Ports | Box 10 |
| M00580651 | M00501271 | 24Fr Y-Ports | Box 10 |

Initial Placements

EndoVive™ Enteral Access Devices

SAFETY Percutaneous Endoscopic Gastrostomy (PEG) Kit

Product Features

Deluxe Safety PEG Procedure Kit

- High-grade silicone dome-bolstered PEG tube
- ChloroPrep® Skin Preparation
- Universal 1.9 mm O.D. x 240 cm retrieval snare
- Double-tier tray packaging
- Two external bolsters
- Multiple sizes and accessories
- Available for push and pull methods

Safety Trocar Catheter

- Needle tip protector designed to engage when the needle stylet is removed from the needle cannula
- Designed to allow re-activation by replacing the needle stylet back into the needle cannula

Safety-Shielded Scalpel

- Thumb-activated safety mechanism retracts spring-loaded No. 11 surgical blade into handle

Safety-Shielded Scalpel

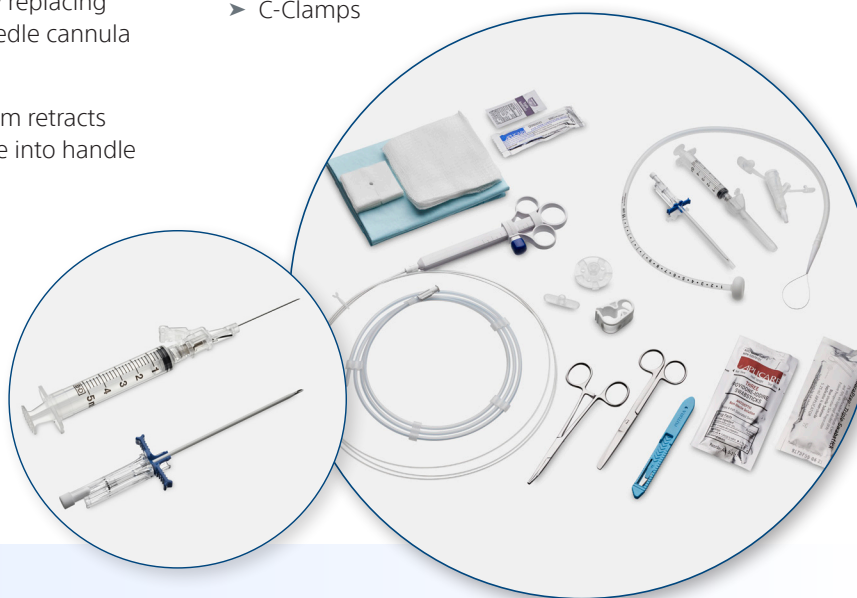
- Thumb-activated safety mechanism retracts spring-loaded No. 11 surgical blade into handle

SafetyGlide® Shielded Injection Needle

- 22 gauge x 1.5" needle designed for injection into abdominal wall
- Shielding mechanism designed for one-finger activation

PEG Accessories

- Y-Ports
- Round Bolsters
- T-Bar Bolster
- C-Clamps



Safety PEG Kit

| Non-ENFit Codes | ENFit Codes | Description | Units |
|-----------------|-------------|----------------------|-------|
| M00566461 | M00509001 | 20Fr Safety PEG Pull | Box 2 |
| M00566471 | M00509011 | 20Fr Safety PEG Push | Box 2 |
| M00566481 | M00509021 | 24Fr Safety PEG Pull | Box 2 |
| M00566491 | M00509031 | 24Fr Safety PEG Push | Box 2 |

PEG Accessories

| Non-ENFit Codes | ENFit Codes | Description | Units |
|-----------------|-------------|--------------|--------|
| M00580641 | M00501261 | 20Fr Y-Ports | Box 10 |
| M00580651 | M00501271 | 24Fr Y-Ports | Box 10 |

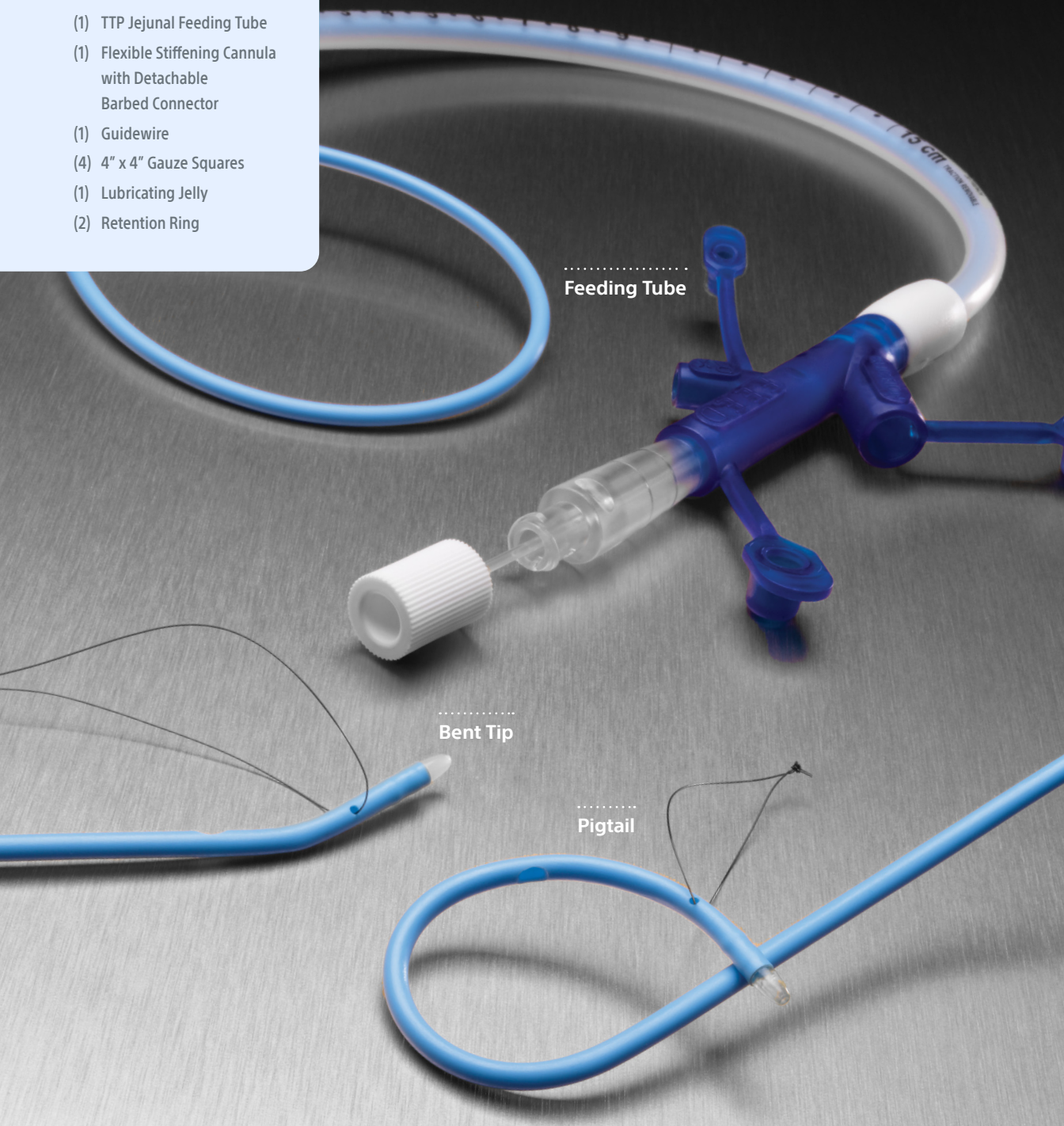


Through-The-PEG (TTP)

EndoVive™ Enteral Access Devices

KIT CONTENTS

- (1) TTP Jejunal Feeding Tube
- (1) Flexible Stiffening Cannula with Detachable Barbed Connector
- (1) Guidewire
- (4) 4" x 4" Gauze Squares
- (1) Lubricating Jelly
- (2) Retention Ring



.....
Feeding Tube

.....
Bent Tip

.....
Pigtail

Through-The-PEG (TTP)

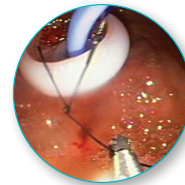
EndoVive™ Enteral Access Devices

Through-The-PEG (TTP) Jejunal Feeding Tube

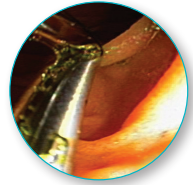
Product Features

Innovative Device Design

- Designed for placement through an existing Standard PEG
 - 68 cm length, 8.5Fr TTP J-Tube compatible with 20Fr PEG
 - 68 cm length, 12Fr TTP J-Tube compatible with 24Fr PEG
- Available in Pigtail Tip and Bent Tip designs, each with a suture loop intended to facilitate distal tip anchoring past the Ligament of Treitz
- Compatible with both Pull and Push (over-the-wire) Placement Techniques



Resolution 360 Clip grasping suture loop



Resolution 360 Clip anchoring suture and jejunum tube to jejunum wall

Flexima Material

- Radiopaque material facilitates fluoroscopic visualization

Temporary Tip

- Temporary tapered tip designed to provide smooth tracking into the jejunum to help ensure proper placement
- Temporary Tip is designed to dissolve at body temperature permitting utilization of the full distal tip lumen diameter which may help reduce premature tube clogging

Hollow Stiffening Stylet

- Provides added stiffness designed to improve pushability and permit greater physician control during placement

Recommended Anchoring Device

- Resolution Clip or Resolution 360 Clip
- Physician controlled rotation designed to allow easier grasping of J-Tube suture loop.



Resolution™ 360 Clip

EndoVive TTP Jejunal Feeding Tube*

| Order Number | Description | Tip Style | Units |
|--------------|--------------------------------|-------------|-------|
| M00566320 | 8.5Fr TTP Jejunal Feeding Tube | Bent Tip | Box 1 |
| M00566330 | 8.5Fr TTP Jejunal Feeding Tube | Pigtail Tip | Box 1 |
| M00566340 | 12Fr TTP Jejunal Feeding Tube | Bent Tip | Box 1 |
| M00566350 | 12Fr TTP Jejunal Feeding Tube | Pigtail Tip | Box 1 |

Recommended Anchoring Device

| Order Number | Description | Working Length (cm) | Minimum Working Channel (mm) | Clip Opening (mm) | Units |
|--------------|----------------------|---------------------|------------------------------|-------------------|--------|
| M00521240 | Resolution™ 360 Clip | 155 | 2.8 | 11 | Each |
| M00521241 | Resolution 360 Clip | 155 | 2.8 | 11 | Box 10 |
| M00521242 | Resolution 360 Clip | 155 | 2.8 | 11 | Box 20 |
| M00521230 | Resolution 360 Clip | 235 | 2.8 | 11 | Each |
| M00521231 | Resolution 360 Clip | 235 | 2.8 | 11 | Box 10 |
| M00521232 | Resolution 360 Clip | 235 | 2.8 | 11 | Box 20 |
| M00521233 | Resolution 360 Clip | 235 | 2.8 | 11 | Box 40 |

*No ENFit version available.

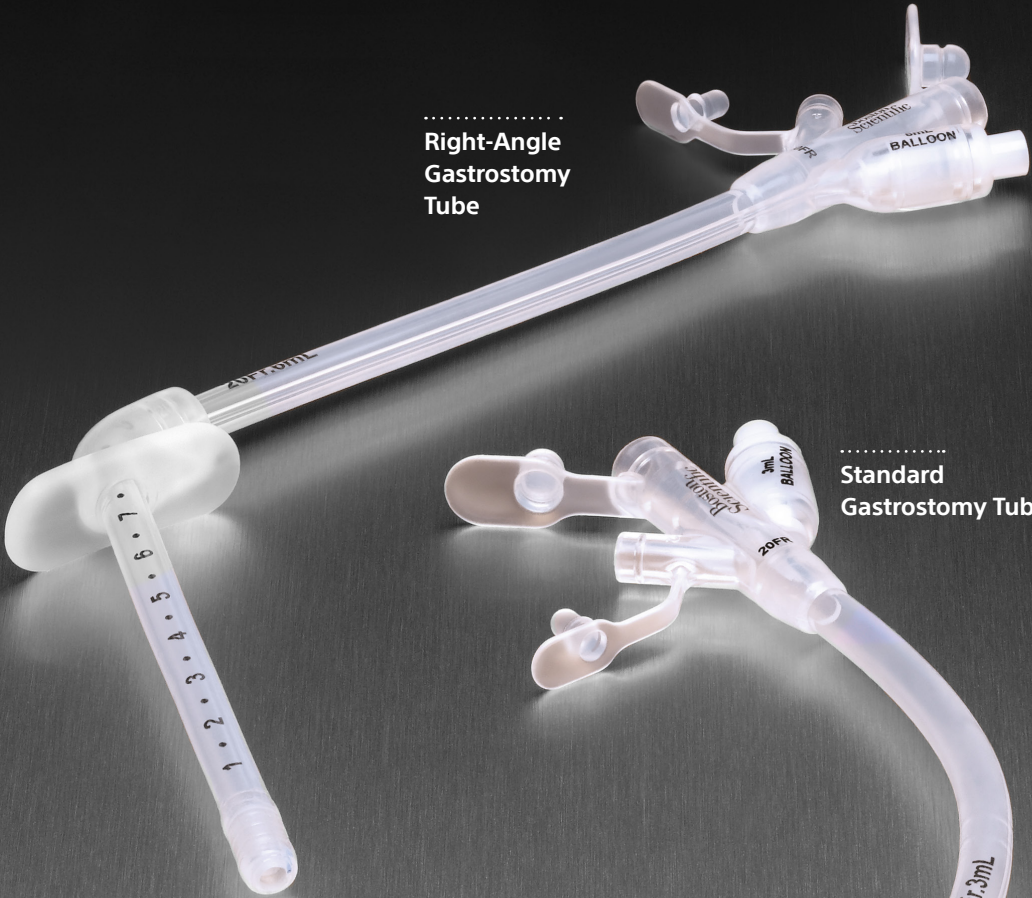
 Latex free



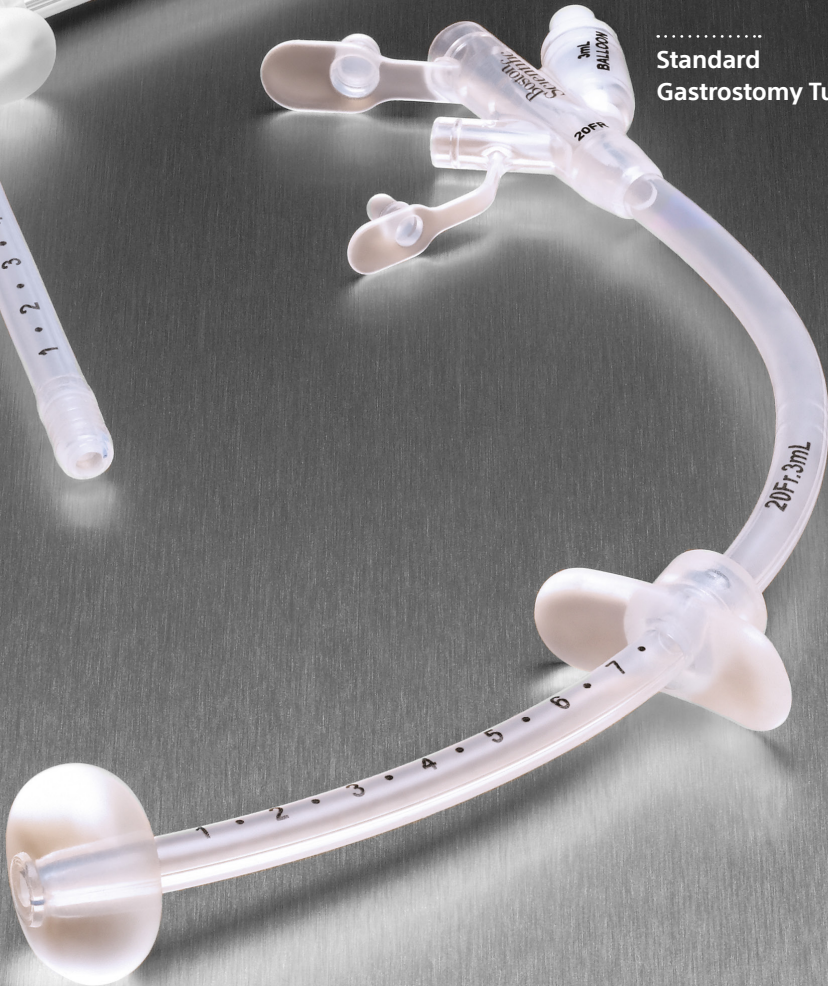
Replacement

EndoVive™ Enteral Access Devices

.....
**Right-Angle
Gastrostomy
Tube**



.....
**Standard
Gastrostomy Tube**



Replacement - Gastrostomy Tubes

EndoVive™ Enteral Access Devices

G-Tube Replacement Kits

Product Features

Low Profile “Pancake” Shaped Balloon

- Designed to offer the deflation characteristics of a balloon for insertion and removal that may be more comfortable for the patient
- Consistent 6 ml balloon inflation across all sizes (12Fr = 4ml)

Replacement Gastrostomy Tube with Optional Right-Angled External Bolster

- Designed to minimize the potential tube kinking when it’s taped down
- Designed to minimize premature pull out of the tube
- Separate medication and feeding ports
- Clear shaft for internal lumen visualization

KIT CONTENTS

- (1) Balloon Replacement with Straight or Right-Angle External Bolster
- (2) 4”x 4” Gauze Pads
- (1) 6 ml Syringe
- (1) Lubricating Jelly

EndoVive Gastrostomy Tube with ENFit Connector

Right Angle Bolster Standard and ENFit G-tubes

Designed to:

- Be less obtrusive
- Reduce or limit premature pull out and potential tube kinking if the tube is taped down and may be more comfortable with the patient
- Make sure all appropriate service lines in your healthcare system are ready to use ENFit enteral connectors. Please contact your Boston Scientific Sales Representative for support with ENFit enteral connectors.

Replacement G-Tubes

| Non-ENFit | ENFit | Non-ENFit Units | ENFit Units | Description |
|-----------|-----------|-----------------|-------------|--|
| M00582040 | M00509881 | Box 1 | Box 5 | Gastrostomy Tube, Straight, Replacement, 12Fr |
| M00582050 | M00509891 | Box 1 | Box 5 | Gastrostomy Tube, Straight, Replacement, 14Fr |
| M00582060 | M00509901 | Box 1 | Box 5 | Gastrostomy Tube, Straight, Replacement, 16Fr |
| M00582070 | M00509911 | Box 1 | Box 5 | Gastrostomy Tube, Straight, Replacement, 18Fr |
| M00582080 | M00509921 | Box 1 | Box 5 | Gastrostomy Tube, Straight, Replacement, 20Fr |
| M00582860 | M00509931 | Box 1 | Box 5 | Gastrostomy Tube, Straight, Replacement, 22Fr |
| M00582090 | M00509941 | Box 1 | Box 5 | Gastrostomy Tube, Straight, Replacement, 24Fr |
| M00582100 | N/A | Box 1 | N/A | Gastrostomy Tube, Straight, Replacement, 28Fr |
| M00582110 | M00509961 | Box 1 | Box 5 | Gastrostomy Tube, Right Angle, Replacement, 12Fr |
| M00582120 | M00509971 | Box 1 | Box 5 | Gastrostomy Tube, Right Angle, Replacement, 14Fr |
| M00582130 | M00509981 | Box 1 | Box 5 | Gastrostomy Tube, Right Angle, Replacement, 16Fr |
| M00582140 | M00509991 | Box 1 | Box 5 | Gastrostomy Tube, Right Angle, Replacement, 18Fr |
| M00582150 | M00510001 | Box 1 | Box 5 | Gastrostomy Tube, Right Angle, Replacement, 20Fr |
| M00582870 | M00510011 | Box 1 | Box 5 | Gastrostomy Tube, Right Angle, Replacement, 22Fr |
| M00582160 | M00510021 | Box 1 | Box 5 | Gastrostomy Tube, Right Angle, Replacement, 24Fr |
| M00582170 | N/A | Box 1 | N/A | Gastrostomy Tube, Right Angle, Replacement, 28Fr |



Gastrostomy Tubes with ENFit Connector

EndoVive™ Enteral Access Devices

KIT CONTENTS

- (1) Balloon Replacement with Straight or Right-Angle External Bolster w/ ENFit Y-Port
- (2) 4" x 4" Gauze Pads
- (1) 6 ml Syringe
- (1) Lubricating Jelly

.....
24Fr Replacement Gastrostomy Tube with ENFit, Straight Bolster.

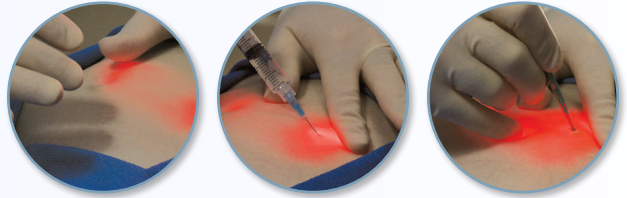


One-Step Button™ Gastrostomy Device

Procedure Guide

STEP 1 Button Site Selection

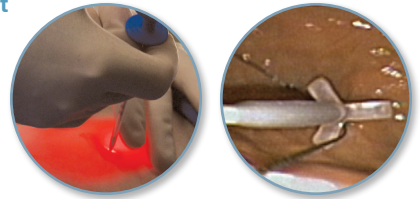
- Introduce gastroscope; insufflate stomach.
- Transilluminate abdominal wall with the light of the gastroscope.
- Apply finger pressure at the point where transillumination is most clear.
- Use anesthetic at the proposed stoma site.
- With scalpel, make a 1.5 cm incision at the selected site.



STEP 2 Percutaneous Stoma Measuring Device (PSMD) Placement

Insert the PSMD through the skin incision and into the stomach under direct vision of the endoscopist.

- Grasp the PSMD cannula with the snare.
- Close the snare around the cannula.
- Extend the thumb to raise the ring. This action will cause the tri-leaflet (located distally) to gather and "BLOOM" open.



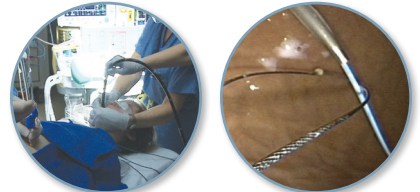
STEP 3 Selection of the Appropriate One-Step Button

- Remove the needle from the cannula. Pull back gently on the measuring device with the leaflets in the "BLOOM" or open position. The measurement is then obtained by noting the centimeter (cm) length indicated by the black markings found on the PSMD cannula.

Read the exposed black markings on the PSMD to determine the size of the One-Step Button to be used.

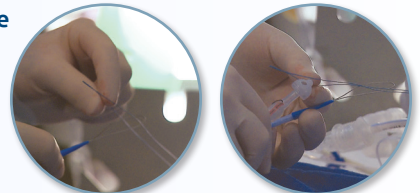
STEP 4 Placement of Insertion Wire

- Pass the insertion wire down the already placed PSMD cannula. Upon visualization of the insertion wire, grasp the wire with the snare.
- Withdraw the endoscope, snare, and the attached snared wire.
- Unlock the PSMD and completely compress the Thumb Ring until it lies flat against the top of the spool's barrel.



STEP 5 Attachment of the One-Step Catheter to the Insertion Wire

- Pass the insertion wire through the One-Step wire loop.



STEP 6 Advancing Catheter

- When the red strip is visible, advance the catheter very slowly. With your hand, provide countertraction on the abdomen around the stoma site. Advance the catheter in small increments until the folded encased wings of the One-Step Button have exited the abdominal wall.
- Remove Sheath.
- Grasp the black suture and pull up along red strip.

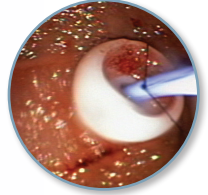
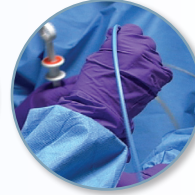
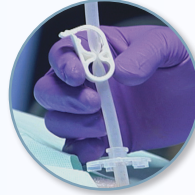


Through-The-PEG (TTP) Jejunal Feeding Tube

Procedure Guide for Pull Method

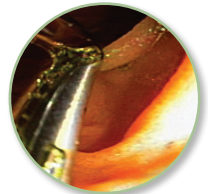
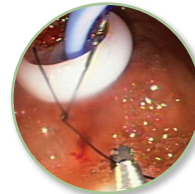
STEP 1

- Maintaining insufflation and visualization of the gastrostomy tube internal bolster, advance the TTP J-Tube through the existing gastrostomy tube until the suture loop and tip have entered the stomach.



STEP 2

- Pass a sterile biopsy forceps or hemostasis clipping device, such as the Resolution™ 360 Clip, through the endoscope and grasp the suture loop at the tip of the TTP J-Tube.



STEP 3

- Using the biopsy forceps or hemostasis clip, advance the TTP J-Tube as far as visual control can be maintained.

STEP 4

- Clip the suture to the wall of the jejunum. Gently withdraw the endoscope leaving the TTP J-Tube in place.

STEP 5

- Visually confirm that the position of the tip of the TTP J-Tube is maintained as the endoscope or clipping device, is withdrawn. Confirm the TTP J-Tube is not looped in the stomach.

STEP 6

- Once the endoscope is removed, seat the TTP J-Tube's hub adapter securely in the existing gastrostomy tube. Secure the distal portion of the TTP J-Tube hub to the existing gastrostomy tube by snapping the two retention ring halves together over the hub and gastrostomy tube.

Enteral Feeding

Coding

| CPT® Code ¹ | Description |
|--|---|
| Gastrostomy Tube Initial Placement | |
| 43246 | Esophagogastroduodenoscopy, flexible, transoral; with directed placement of percutaneous gastrostomy tube |
| 49440 | Insertion of gastrostomy tube, percutaneous, under fluoroscopic guidance including contrast injection(s), image documentation and report |
| Gastrostomy Tube Replacement/Reposition | |
| 43762* | Replacement of gastrostomy tube, percutaneous, includes removal, when performed, without imaging or endoscopic guidance, not requiring revision of gastrostomy tract |
| 43763* | Replacement of gastrostomy tube, percutaneous, includes removal, when performed, without imaging or endoscopic guidance, requiring revision of gastrostomy tract |
| 43761 | Repositioning of a naso- or oro-gastric feeding tube, through the duodenum for enteric nutrition |
| 49450 | Replacement of gastrostomy or cecostomy (or other colonic) tube, percutaneous, under fluoroscopic guidance including contrast injection(s), image documentation and report |
| Jejunostomy Tube | |
| 44373 | Small intestinal endoscopy, enteroscopy beyond second portion of duodenum, not including ileum; with conversion of percutaneous gastrostomy tube to percutaneous jejunostomy tube |
| 49440 | Insertion of gastrostomy tube, percutaneous, under fluoroscopic guidance including contrast injection(s), image documentation and report |
| 49446 | Conversion of gastrostomy tube to gastro-jejunostomy tube, percutaneous, under fluoroscopic guidance including contrast injection(s), image documentation and report |
| 49452 | Replacement of gastro-jejunostomy tube, percutaneous, under fluoroscopic guidance including contrast injection(s), image documentation and report |
| Other Procedures | |
| 49460 | Mechanical removal of obstructive material from gastrostomy, duodenostomy, jejunostomy, gastro-jejunostomy, or cecostomy (or other colonic) tube, any method, under fluoroscopic guidance including contrast injection(s), if performed, image documentation and report |

*Effective January 1, 2019 CPT Code 43760 deleted and replaced with codes 43762 and 43763.

1. CPT Copyright 2021 American Medical Association. All rights reserved. CPT is a registered trademark of the American Medical Association. Applicable FARS/DFARS Restrictions Apply to Government Use. Fee schedules, relative value units, conversion factors and/or related components are not assigned by the AMA, are not part of CPT, and the AMA is not recommending their use. The AMA does not directly or indirectly practice medicine or dispense medical services. The AMA assumes no liability for data contained or not contained herein.

Ordering Information

EndoVive™ Enteral Access Devices

One-Step Button Low Profile PEG Kits

| Non-ENFit Codes | ENFit Codes | Description | Length (cm) | Color Code | Units | Pricing |
|-----------------|-------------|--|-------------|------------|-------|---------|
| M00563120 | M00509690 | 18Fr Low Profile PEG Kit, Pull | 1.2 | Yellow | Box 1 | |
| M00563130 | M00509700 | 18Fr Low Profile PEG Kit, Pull | 1.7 | Yellow | Box 1 | |
| M00563140 | M00509710 | 18Fr Low Profile PEG Kit, Pull | 2.4 | Yellow | Box 1 | |
| M00563150 | M00509720 | 18Fr Low Profile PEG Kit, Pull | 3.4 | Yellow | Box 1 | |
| M00563160 | M00509730 | 18Fr Low Profile PEG Kit, Pull | 4.4 | Yellow | Box 1 | |
| M00563180 | M00509740 | 18Fr Low Profile PEG Kit, Push (Guidewire) | 1.7 | Yellow | Box 1 | |
| M00563190 | M00509750 | 18Fr Low Profile PEG Kit, Push (Guidewire) | 2.4 | Yellow | Box 1 | |
| M00563010 | M00509580 | 24Fr Low Profile PEG Kit, Pull | 1.7 | Blue | Box 1 | |
| M00563020 | M00509590 | 24Fr Low Profile PEG Kit, Pull | 2.4 | Blue | Box 1 | |
| M00563030 | M00509600 | 24Fr Low Profile PEG Kit, Pull | 3.4 | Blue | Box 1 | |
| M00563040 | M00509610 | 24Fr Low Profile PEG Kit, Pull | 4.4 | Blue | Box 1 | |
| M00563080 | M00509630 | 24Fr Low Profile PEG Kit, Push (Guidewire) | 2.4 | Blue | Box 1 | |
| M00563090 | M00509620 | 24Fr Low Profile PEG Kit, Push (Guidewire) | 3.4 | Blue | Box 1 | |
| M00563100 | M00509680 | 24Fr Low Profile PEG Kit, Push (Guidewire) | 4.4 | Blue | Box 1 | |

Low Profile Button Replacements

| Non-ENFit Codes | ENFit Codes | Description | Length (cm) | Units | Pricing |
|-----------------|-------------|-------------------------------------|-------------|-------|---------|
| M00562760 | M00509830 | 18Fr Low Profile Button Replacement | 1.2 | Box 1 | |
| M00562770 | M00509840 | 18Fr Low Profile Button Replacement | 1.7 | Box 1 | |
| M00562780 | M00509850 | 18Fr Low Profile Button Replacement | 2.4 | Box 1 | |
| M00562790 | M00509860 | 18Fr Low Profile Button Replacement | 3.4 | Box 1 | |
| M00562800 | M00509870 | 18Fr Low Profile Button Replacement | 4.4 | Box 1 | |
| M00562820 | M00509410 | 24Fr Low Profile Button Replacement | 1.7 | Box 1 | |
| M00562830 | M00509420 | 24Fr Low Profile Button Replacement | 2.4 | Box 1 | |
| M00562840 | M00509430 | 24Fr Low Profile Button Replacement | 3.4 | Box 1 | |

Low Profile Button Accessories

| Non-ENFit Codes | ENFit Codes | Description | Length (cm) | Units | Pricing |
|-----------------|-------------|-------------------------------------|-------------|--------|---------|
| M00580401 | M00501121 | 18Fr Decompression Tube | 1.2 | Box 10 | |
| M00580411 | M00501131 | 18Fr Decompression Tube | 1.7 | Box 10 | |
| M00580421 | M00501141 | 18Fr Decompression Tube | 2.4 | Box 10 | |
| M00580431 | M00501151 | 18Fr Decompression Tube | 3.4 | Box 10 | |
| M00580441 | M00501161 | 18Fr Decompression Tube | 4.4 | Box 10 | |
| M00580461 | M00501181 | 24Fr Decompression Tube | 1.7 | Box 10 | |
| M00580471 | M00501191 | 24Fr Decompression Tube | 2.4 | Box 10 | |
| M00580481 | M00501201 | 24Fr Decompression Tube | 3.4 | Box 10 | |
| M00580491 | M00501211 | 24Fr Decompression Tube | 4.4 | Box 10 | |
| M00580171 | M00501091 | 18Fr Bolus Straight Adapter | | Box 10 | |
| M00580181 | M00501061 | 18Fr Continuous Right-Angle Adapter | | Box 10 | |
| M00580231 | M00501101 | 24Fr Bolus Straight Adapter | | Box 10 | |

Ordering Information

EndoVive™ Enteral Access Devices

Standard PEG Kit

| Non-ENFit Codes | ENFit Codes | Description | Units | Pricing |
|-----------------|-------------|---|-------|---------|
| M00568201 | M00509041 | 20Fr Standard PEG Kit, Pull with Lidocaine Ampule | Box 2 | |
| M00568211 | M00509051 | 20Fr Standard PEG Kit, Push with Lidocaine Ampule | Box 2 | |
| M00568241 | M00509061 | 24Fr Standard PEG Kit, Pull with Lidocaine Ampule | Box 2 | |
| M00568251 | M00509071 | 24Fr Standard PEG Kit, Push with Lidocaine Ampule | Box 2 | |

Safety PEG Kit

| Non-ENFit Codes | ENFit Codes | Description | Units | Pricing |
|-----------------|-------------|----------------------|-------|---------|
| M00566461 | M00509001 | 20Fr Safety PEG Pull | Box 2 | |
| M00566471 | M00509011 | 20Fr Safety PEG Push | Box 2 | |
| M00566481 | M00509021 | 24Fr Safety PEG Pull | Box 2 | |
| M00566491 | M00509031 | 24Fr Safety PEG Push | Box 2 | |

PEG Accessories

| Non-ENFit Codes | ENFit Codes | Description | Units | Pricing |
|-----------------|-------------|--------------|--------|---------|
| M00580641 | M00501261 | 20Fr Y-Ports | Box 10 | |
| M00580651 | M00501271 | 24Fr Y-Ports | Box 10 | |

EndoVive TTP Jejunal Feeding Tube

| Order Number | Description | Tip Style | Units | Pricing |
|--------------|--------------------------------|-------------|-------|---------|
| M00566320 | 8.5Fr TTP Jejunal Feeding Tube | Bent Tip | Box 1 | |
| M00566330 | 8.5Fr TTP Jejunal Feeding Tube | Pigtail Tip | Box 1 | |
| M00566340 | 12Fr TTP Jejunal Feeding Tube | Bent Tip | Box 1 | |
| M00566350 | 12Fr TTP Jejunal Feeding Tube | Pigtail Tip | Box 1 | |

Replacement G-Tubes

| Non-ENFit | ENFit | Non-ENFit Units | ENFit Units | Description | Pricing |
|-----------|-----------|-----------------|-------------|--|---------|
| M00582040 | M00509881 | Box 1 | Box 5 | Gastrostomy Tube, Straight, Replacement, 12Fr | |
| M00582050 | M00509891 | Box 1 | Box 5 | Gastrostomy Tube, Straight, Replacement, 14Fr | |
| M00582060 | M00509901 | Box 1 | Box 5 | Gastrostomy Tube, Straight, Replacement, 16Fr | |
| M00582070 | M00509911 | Box 1 | Box 5 | Gastrostomy Tube, Straight, Replacement, 18Fr | |
| M00582080 | M00509921 | Box 1 | Box 5 | Gastrostomy Tube, Straight, Replacement, 20Fr | |
| M00582860 | M00509931 | Box 1 | Box 5 | Gastrostomy Tube, Straight, Replacement, 22Fr | |
| M00582090 | M00509941 | Box 1 | Box 5 | Gastrostomy Tube, Straight, Replacement, 24Fr | |
| M00582100 | N/A | Box 1 | N/A | Gastrostomy Tube, Straight, Replacement, 28Fr | |
| M00582110 | M00509961 | Box 1 | Box 5 | Gastrostomy Tube, Right Angle, Replacement, 12Fr | |
| M00582120 | M00509971 | Box 1 | Box 5 | Gastrostomy Tube, Right Angle, Replacement, 14Fr | |
| M00582130 | M00509981 | Box 1 | Box 5 | Gastrostomy Tube, Right Angle, Replacement, 16Fr | |
| M00582140 | M00509991 | Box 1 | Box 5 | Gastrostomy Tube, Right Angle, Replacement, 18Fr | |
| M00582150 | M00510001 | Box 1 | Box 5 | Gastrostomy Tube, Right Angle, Replacement, 20Fr | |
| M00582870 | M00510011 | Box 1 | Box 5 | Gastrostomy Tube, Right Angle, Replacement, 22Fr | |
| M00582160 | M00510021 | Box 1 | Box 5 | Gastrostomy Tube, Right Angle, Replacement, 24Fr | |

Link to BostonScientific.com to view updated reimbursement information or visit
www.bostonscientific.com/reimbursement

Health economic and reimbursement information provided by Boston Scientific Corporation is gathered from third-party sources and is subject to change without notice as a result of complex and frequently changing laws, regulations, rules and policies. This information is presented for illustrative purposes only and does not constitute reimbursement or legal advice. Boston Scientific encourages providers to submit accurate and appropriate claims for services. It is always the provider's responsibility to determine medical necessity, the proper site for delivery of any services, and to submit appropriate codes, charges, and modifiers for services that are rendered. It is also always the provider's responsibility to understand and comply with Medicare national coverage determinations (NCD), Medicare local coverage determinations (LCD) and any other coverage requirements established by relevant payers which can be updated frequently. Boston Scientific recommends that you consult with your payers, reimbursement specialists and/or legal counsel regarding coding, coverage, and reimbursement matters.

This educational video was produced in cooperation with Boston Scientific. Results from case studies are not predictive of results in other cases. Results in other cases may vary.

All photographs taken by Boston Scientific

Caution: U.S. Federal law restricts this device to sale by or on the order of a physician.
Boston Scientific does not promote the use of its products outside their FDA-approved label.

**Boston
Scientific**
Advancing science for life™

Boston Scientific Corporation
300 Boston Scientific Way
Marlborough, MA 01752
www.bostonscientific.com

Ordering Information
1.888.272.1001

2022 Copyright © Boston Scientific Corporation or its affiliates.
All rights reserved.

ENDO-120211-AC